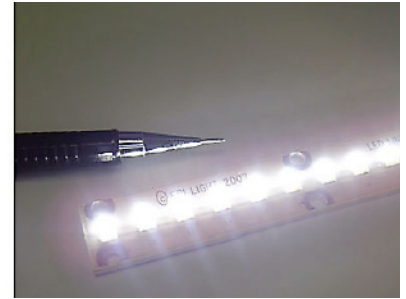
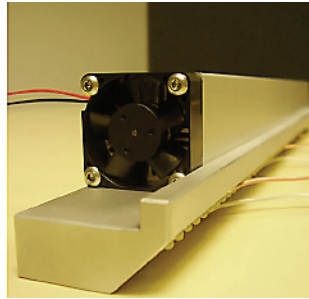


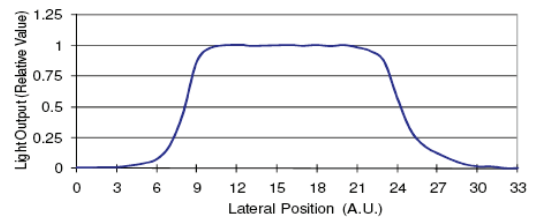
Linear Line Light Datasheet



Description

Epi-Light has integrated the latest semiconductor technology with precision optics, thermal management, mechanical components and control electronics to produce our linear line light system. Epi-Light's Linear Line Light technology brings true customisation to high brightness line-lights. Unique high-power LED modules of various size can be combined with optical and heatsink modules to produce high brightness line-lights with dimensions set by the customer. Linear Line Light technology has been designed to ensure all areas of inspection are evenly illuminated in a uniform continuous high intensity beam.

- High intensity LED light source scalable to any length
- Generates no heat (cool light source)
- Compact design (standard cross section 30x35mm)
- Switches on/off instantly – zero warm up time
- Electronic control – does not require mechanical shutters
- Non toxic – no mercury or lead
- High reliability and long lifetime.



Specifications

Wavelength	White/Blue/Green/Red
Optical power	150lm per cm
Voltage	24VDC
Current (Continuous)	1000mA
External housing	Anodised aluminium
Thermal management	Fan cooled heatsink
Mounting (Separate mount included)	M6 screws
Power supply (Included)	Universal AC or 24VDC input 0-100% variable constant current out Input for external trigger or pulse

Dimensions

